

# Model S2160-PE21-RA

Barrier Free Combination Station, Recessed Activation, Eye/Face Wash, Vertically Mounted Emergency Shower, Stainless Steel Showerhead



## SPECIFICATIONS:

Model S2160-PE21-RA is a barrier free, recessed activated, eye/face wash with ABS plastic eye/face wash spray heads and a vertically mounted emergency shower with a stainless steel showerhead. Eye/face wash swings down over the floor from the recessed cabinet and the water flow is activated automatically. The eye/face wash flow is terminated once the unit has been swung back up into its original position for storage.

*NOTE: When the activation is installed at the proper height, unit meets the ADA accessibility requirements.*

## STANDARD EQUIPMENT:

**Showerhead:** Stainless steel, 7-3/8" diameter showerhead with a 20 gpm flow regulator.

**Shower Valve:** 1" rough chrome plated brass stay-open ball valve installed inside a wall mounted, fully recessed stainless steel enclosure with a vandal resistant access panel and an actuator that remains fully recessed, even when the unit is activated.

**Shower Water Supply:** 1" NPT female threaded brass inlet.

**Spray Head Assembly:** ABS yellow plastic eye/face wash heads with integral flip dust covers, internal flow controls and filters to remove debris from the water.

**Eye/Face Wash Valve:** Swing down valve has a 316 stainless steel valve housing and is mounted inside the recessed, wall mounted enclosure and has a 50 mesh inline strainer.

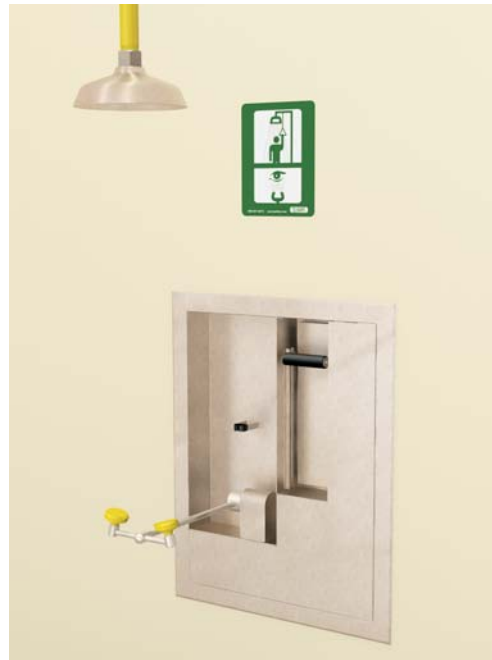
**Eye/Face Wash Water Supply:** 1/2" NPT female threaded brass inlet.

**Piping:** Schedule 40, 1" galvanized steel pipe, yellow powder coated finish.

**Universal Sign:** ANSI compliant, vertical identification sign.

**Weekly Test Tag:** A water proof test card to record the date and inspector's name for weekly functional testing of the unit.

Model: S2160-PE21-RA



## OPTIONAL ACCESSORIES:

*Additional costs may be incurred*

- AL3 Electric alarm for recessed laboratory applications
- AS All stainless steel
- FLW1 Flow switch, single pole
- MC3 Modesty curtain for wall showers
- PAN Waste water drain pan (eye/face wash only)
- PCP Polished chrome plated pipe
- SDC Stainless steel dust covers
- SV1 Stainless steel 1" ball valve
- TMB2 Thermostatic mixing valve with an external cold water bypass that delivers tepid water as outlined by ANSI Z358.1-2004
- TMV2 Thermostatic mixing valve that delivers tepid water as outlined by ANSI Z358.1-2004

Acorn Safety assumes no responsibility for use of void or suspended data. © Copyright 2007 Acorn Safety, City of Industry, CA, A Division of Acorn Engineering Company. Please visit [www.acornsafety.com](http://www.acornsafety.com) for most current specifications.

Submittal # **S2160-PE21-RA**  
[Cat. 07/CMB] Rev. A 2/17/09

Product carries the following certifications:



Test rating conditions are compliant to ANSI Z358.1-2004



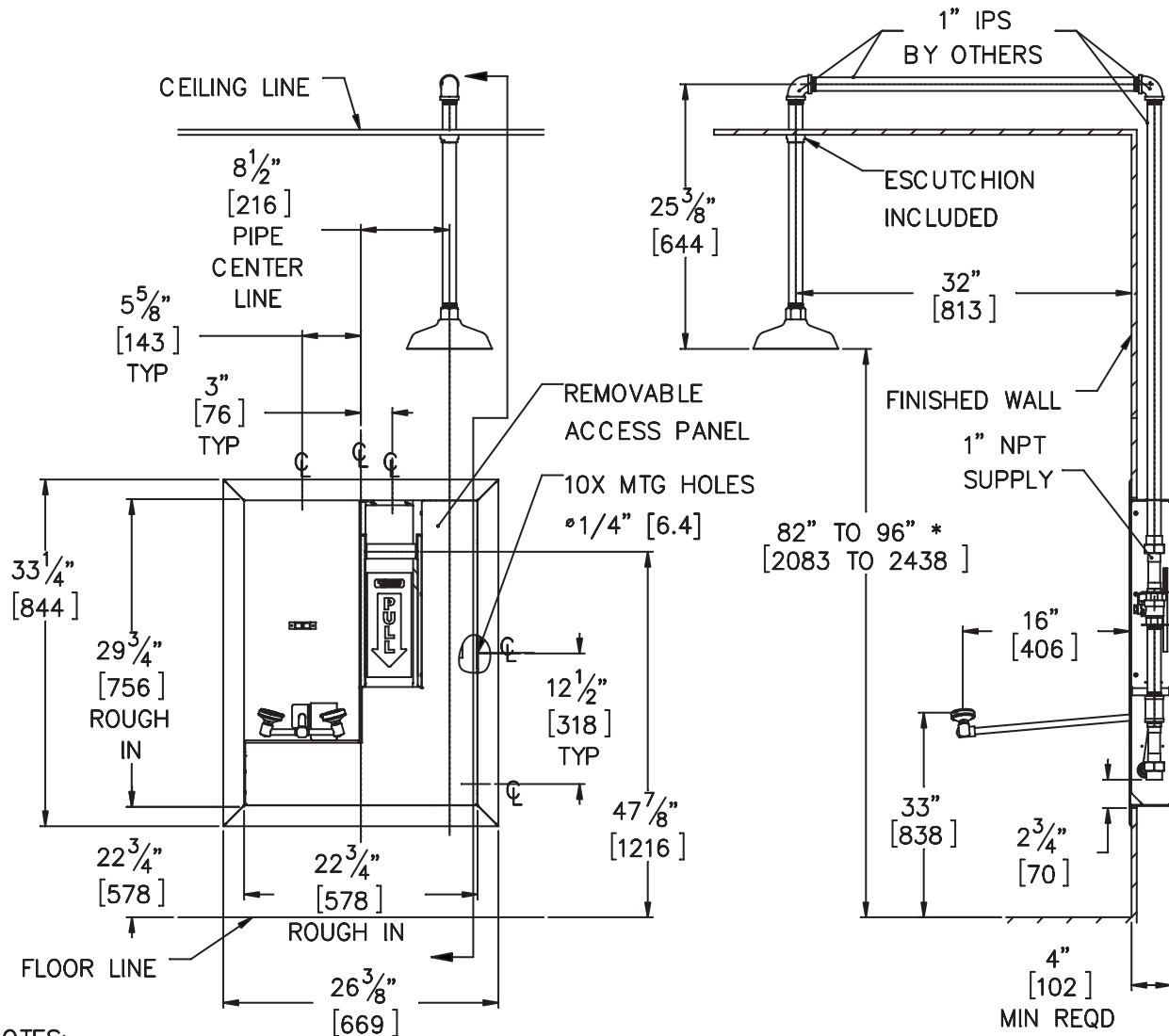
Member of Acorn Family of Companies

ACORN SAFETY  
15125 Proctor Avenue  
City of Industry, CA  
91746 U.S.A.  
Phone 800-591-9372  
626-855-4804  
Fax 626-937-4213  
[www.acornsafety.com](http://www.acornsafety.com)

# TECHNICAL DIMENSIONS

All dimensions are nominal and subject to manufacturer's change without notice. Acorn Safety assumes no responsibility for use of void or suspended data. Dimensions may change with the addition of optional accessories. © 2008 Acorn Safety, a Division of Acorn Engineering Company. Please visit [www.acornsafety.com](http://www.acornsafety.com) for most current specifications.

☐ **Model S2160-PE21-RA** : Barrier Free Combination Station, Recessed Activation, Eye/Face Wash, Vertically Mounted Emergency Shower, Stainless Steel Showerhead



**NOTES:**

1. ALL DIMENSIONS ARE IN INCHES [MM].
- \*2. ANSI Z358.1 REQUIRES THE SHOWER HEAD TO BE MOUNTED BETWEEN 82" [2083] AND 96" [2438] ABOVE THE FLOOR.
3. DIMENSIONS SHOWN ARE FOR RECOMMENDED ADULT HEIGHT. ADJUST VERTICAL DIMENSIONS TO COMPLY WITH FEDERAL, STATE AND LOCAL CODES.
4. PIPE HANGERS SUPPLIED BY OTHERS.

Rough-in # **S2160-PE21-RA** Rev. A 11/20/08

Acorn Safety warrants that its products are free from defects in material or workmanship under normal use and service for a period of one year from date of shipment. Acorn's liability under this warranty shall be discharged solely by replacement or repair of defective material, provided Acorn is notified in writing within one year from date of shipment, F.O.B. Industry, California.

**SELECTION SUMMARY & APPROVAL FOR MANUFACTURING**

Model Number & Options	Quantity
Company	Date
Contact	Title
Approval for Manufacturing/Signature	

ACORN SAFETY  
 Phone 800-591-9372 or 626-855-4804  
[www.acornsafety.com](http://www.acornsafety.com)