

# Model S3200-RA

Recessed Activated and Mounted  
Emergency Shower, Stainless Steel Showerhead



## SPECIFICATIONS:

Model S3200-RA is a recessed activated and mounted emergency shower with a stainless steel showerhead.

*Note: When the activation is installed at the proper height, unit meets the ADA accessibility requirements.*

## STANDARD EQUIPMENT:

**Showerhead:** Stainless steel, 7-3/8" diameter showerhead with a flange for flush mounting to the ceiling and a 20 gpm flow regulator.

**Valve:** 1" rough chrome plated brass stay-open ball valve installed inside a wall mounted, fully recessed stainless steel enclosure with a vandal resistant access panel and an actuator that remains fully recessed, even when the unit is activated.

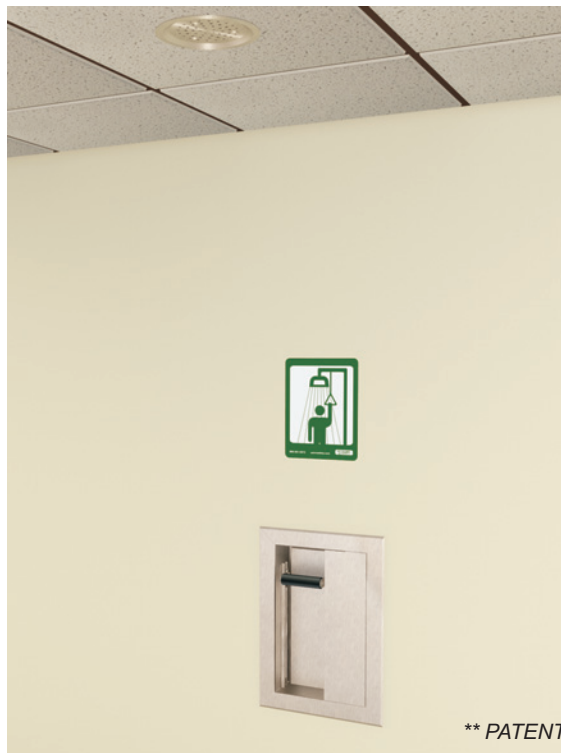
**Water Supply:** 1" NPT female threaded brass inlet.

**Piping:** Schedule 40, 1" galvanized steel pipe, yellow powder coated finish.

**Universal Sign:** ANSI compliant, vertical identification sign.

**Weekly Test Tag:** A water proof test card to record the date and inspector's name for weekly functional testing of the unit.

Model: S3200-RA



\*\* PATENT PENDING

## OPTIONAL ACCESSORIES:

*Additional costs may be incurred*

- AL3 Electric alarm for recessed laboratory applications
- FLW1 Flow switch, single pole
- MC3 Modesty curtain for wall showers
- PCP Polished chrome plated pipe
- SV1 1" stainless steel ball valve
- TMB2 Thermostatic mixing valve with an external cold water bypass that delivers tepid water as outlined by ANSI Z358.1-2004
- TMV2 Thermostatic mixing valve that delivers tepid water as outlined by ANSI Z358.1-2004

Acorn Safety assumes no responsibility for use of void or suspended data. © Copyright 2007 Acorn Safety, City of Industry, CA, A Division of Acorn Engineering Company. Please visit [www.acornsafety.com](http://www.acornsafety.com) for most current specifications.

Submittal # **S3200-RA**  
[Cat. 07/SHR] 11/1/07

Product complies to the following standards:



Test rating conditions are compliant to ANSI Z358.1-2004



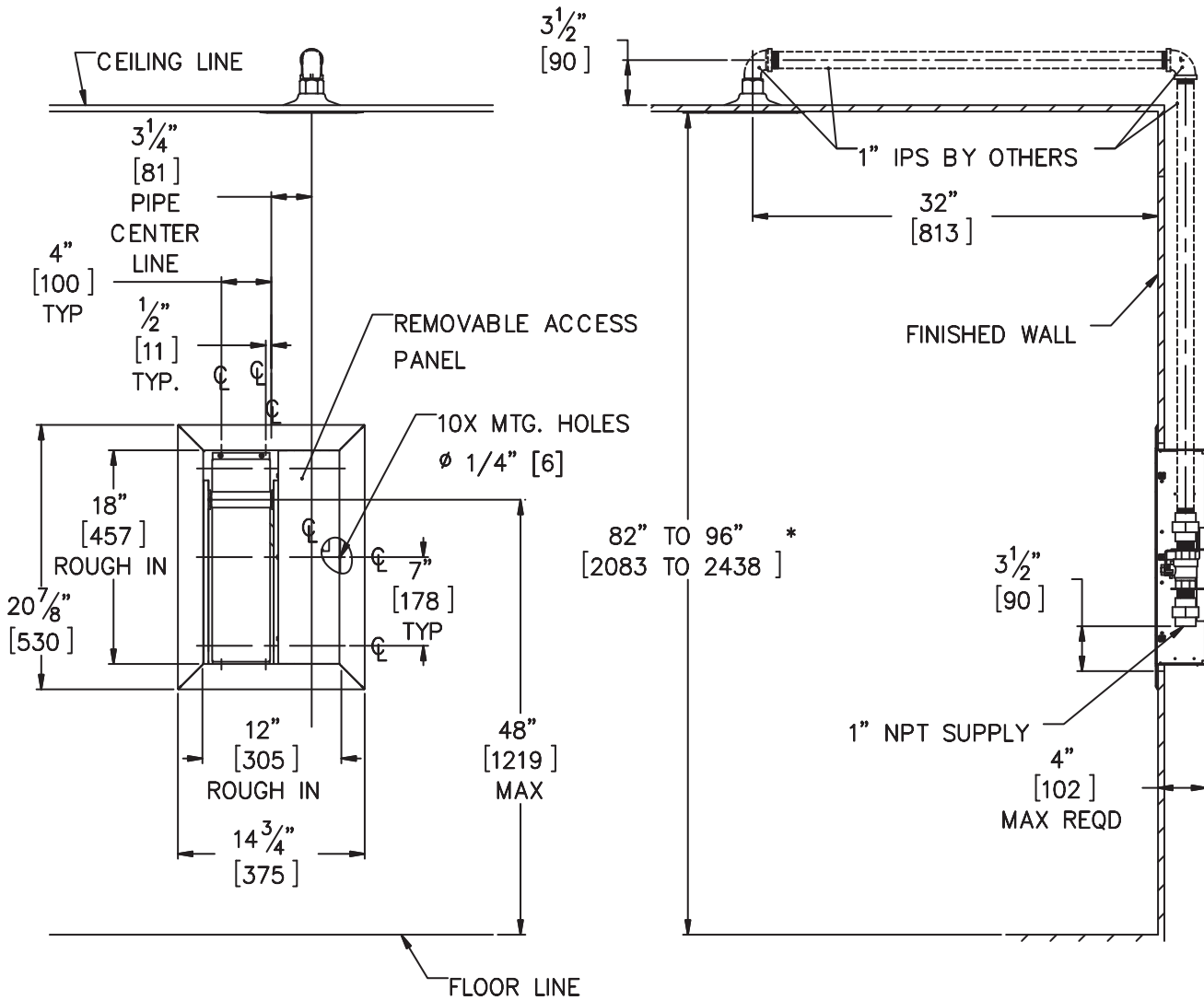
Member of Acorn  
Family of Companies

ACORN SAFETY  
15125 Proctor Avenue  
City of Industry, CA  
91746 U.S.A.  
Phone 800-591-9372  
626-855-4804  
Fax 626-937-4213  
[www.acornsafety.com](http://www.acornsafety.com)

# TECHNICAL DIMENSIONS

All dimensions are nominal and subject to manufacturer's change without notice. Acorn Safety assumes no responsibility for use of void or suspended data. Dimensions may change with the addition of optional accessories. © 2008 Acorn Safety, a Division of Acorn Engineering Company. Please visit [www.acornsafety.com](http://www.acornsafety.com) for most current specifications.

☐ **Model S3200-RA** : Recessed Activated and Mounted Emergency Shower, Stainless Steel Showerhead



**NOTES:**

1. ALL DIMENSIONS ARE IN INCHES [MM].
- \*2. ANSI Z358.1 REQUIRES THE SHOWER HEAD TO BE MOUNTED BETWEEN 82" [2083] AND 96" [2438] ABOVE THE FLOOR.
3. PIPE HANGERS SUPPLIED BY OTHERS.

Rough-in # **S3200-RA** Rev. A 11/20/08

Acorn Safety warrants that its products are free from defects in material or workmanship under normal use and service for a period of one year from date of shipment. Acorn's liability under this warranty shall be discharged solely by replacement or repair of defective material, provided Acorn is notified in writing within one year from date of shipment, F.O.B. Industry, California.

SELECTION SUMMARY & APPROVAL FOR MANUFACTURING	
Model Number & Options _____	Quantity _____
Company _____	Date _____
Contact _____	Title _____
Approval for Manufacturing/Signature _____	



Phone 800-591-9372 or 626-855-4804  
[www.acornsafety.com](http://www.acornsafety.com)