

# Model S0860-RH

Deck Mounted, Swing Down Eye/Face Wash



## SPECIFICATIONS:

Model S0860-RH is a deck mounted swing down eye/face wash that is installed behind the sink with ABS plastic eye/face wash spray heads. The eye/face wash swings down over the sink from the rear and the water flow is activated automatically. The eye/face wash flow is terminated once the unit has been swung back up into its original position for storage.

## STANDARD EQUIPMENT:

**Spray Head Assembly:** ABS yellow plastic eye/face wash heads with integral flip dust covers, internal flow controls and filters to remove debris from the water.

**Valve:** Swing down valve is mounted behind the sink on the countertop and has a 50 mesh inline strainer.

**Water Supply:** 1/2" NPT female threaded brass inlet.

**Mounting:** Deck mounted, 304 stainless steel valve housing.

**Universal Sign:** ANSI compliant, vertical identification sign.

**Weekly Test Tag:** A water proof test card to record the date and inspector's name for weekly functional testing of the unit.

Model: S0860-RH



## OPTIONAL ACCESSORIES:

*Additional costs may be incurred*

- AS All stainless steel
- FLW2 Flow switch, single pole
- LH Left hand mounting (Use model S0860-LH)
- SDC Stainless steel dust covers
- TMB1 Thermostatic mixing valve with an external cold water bypass that delivers tepid water as outlined by ANSI Z358.1-2004
- TMV1 Thermostatic mixing valve that delivers tepid water as outlined by ANSI Z358.1-2004

Acorn Safety assumes no responsibility for use of void or suspended data. © Copyright 2007 Acorn Safety, City of Industry, CA, A Division of Acorn Engineering Company. Please visit [www.acornsafety.com](http://www.acornsafety.com) for most current specifications.

Submittal # **S0860-RH**  
[Cat. 07/EFW] Rev. A 2/17/09

Product carries the following certifications:



Test rating conditions are compliant to ANSI Z358.1-2004



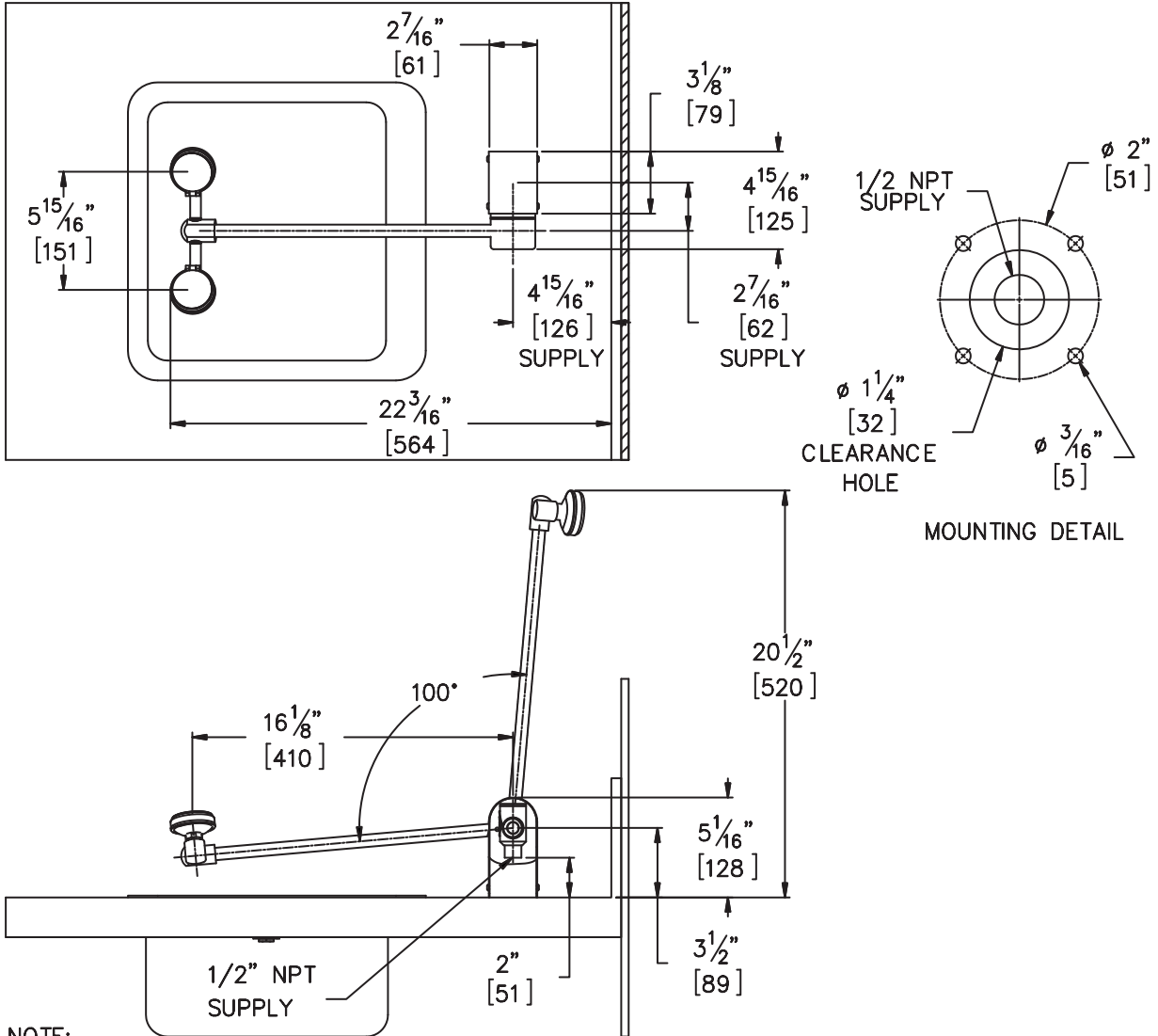
Member of Acorn  
Family of Companies

ACORN SAFETY  
15125 Proctor Avenue  
City of Industry, CA  
91746 U.S.A.  
Phone 800-591-9372  
626-855-4804  
Fax 626-937-4213  
[www.acornsafety.com](http://www.acornsafety.com)

# TECHNICAL DIMENSIONS

All dimensions are nominal and subject to manufacturer's change without notice. Acorn Safety assumes no responsibility for use of void or suspended data. Dimensions may change with the addition of optional accessories. © 2008 Acorn Safety, a Division of Acorn Engineering Company. Please visit [www.acornsafety.com](http://www.acornsafety.com) for most current specifications.

☐ Model S0860-RH : Deck Mounted, Swing Down Eye/Face Wash



NOTE:

1. ALL DIMENSIONS ARE IN INCHES [MM].
2. ANSI Z358.1 REQUIRES NOZZLES TO BE BETWEEN 33" [838] AND 45" [1143] ABOVE FLOOR.
3. RIGHT HAND MODEL SHOWN. LEFT HAND MODELS AVAILABLE.

Rough-in # **S0860-RH** Rev. A 11/20/08

Acorn Safety warrants that its products are free from defects in material or workmanship under normal use and service for a period of one year from date of shipment. Acorn's liability under this warranty shall be discharged solely by replacement or repair of defective material, provided Acorn is notified in writing within one year from date of shipment, F.O.B. Industry, California.

## SELECTION SUMMARY & APPROVAL FOR MANUFACTURING

Model Number & Options _____	Quantity _____
Company _____	Date _____
Contact _____	Title _____
Approval for Manufacturing/Signature _____	



Phone 800-591-9372 or 626-855-4804  
[www.acornsafety.com](http://www.acornsafety.com)