

# Model S0560

Recessed, Wall Mounted,  
Swing Down Eye/Face Wash



## SPECIFICATIONS:

Model S0560 is a recessed, wall mounted swing down eye/face wash that is installed in the wall with a stainless steel cabinet and ABS plastic eye/face wash spray heads. The eye/face wash swings down horizontally and the water flow is activated automatically. The eye/face wash flow is terminated once the unit has been swung back up into the cabinet for storage.

*NOTE: Unit is ADA compliant when installed at the appropriate height.*

## STANDARD EQUIPMENT:

**Spray Head Assembly:** ABS yellow plastic eye/face wash heads with integral flip dust covers, internal flow controls and filters to remove debris from the water. An anti-microbial agent is molded into the ABS material, providing integrated protection.

**Valve:** Swing down valve is mounted in the cabinet on the wall and has a 50 mesh inline strainer.

**Water Supply:** 1/2" NPT female threaded brass inlet.

**Mounting:** Wall mounted, 18 gage stainless steel cabinet.

**Universal Sign:** ANSI compliant, vertical identification sign.

**Weekly Test Tag:** A water proof test card to record the date and inspector's name for weekly functional testing of the unit.

Model: S0560



## OPTIONAL ACCESSORIES:

*Additional costs may be incurred*

- AL3 Electric alarm for recessed laboratory application
- FLW2 Flow switch, single pole
- PAN Waste water drain pan
- SDC Stainless steel dust covers
- TMV8 Thermostatic mixing valve is ASSE Listed per the ASSE 1071 standard. The tepid output water complies with ANSI Z358.1 standard.



Member of  
U.S. Green  
Building Council



Recyclable  
Product

Acorn Safety assumes no responsibility for use of void or suspended data. © Copyright 2010 Acorn Safety, City of Industry, CA, A Division of Acorn Engineering Company. Please visit [www.acornsafety.com](http://www.acornsafety.com) for most current specifications.

Submittal # **S0560**  
[EW] Rev. B 9/1/10

Product carries the following certifications:



Test rating conditions are compliant to ANSI Z358.1-2009



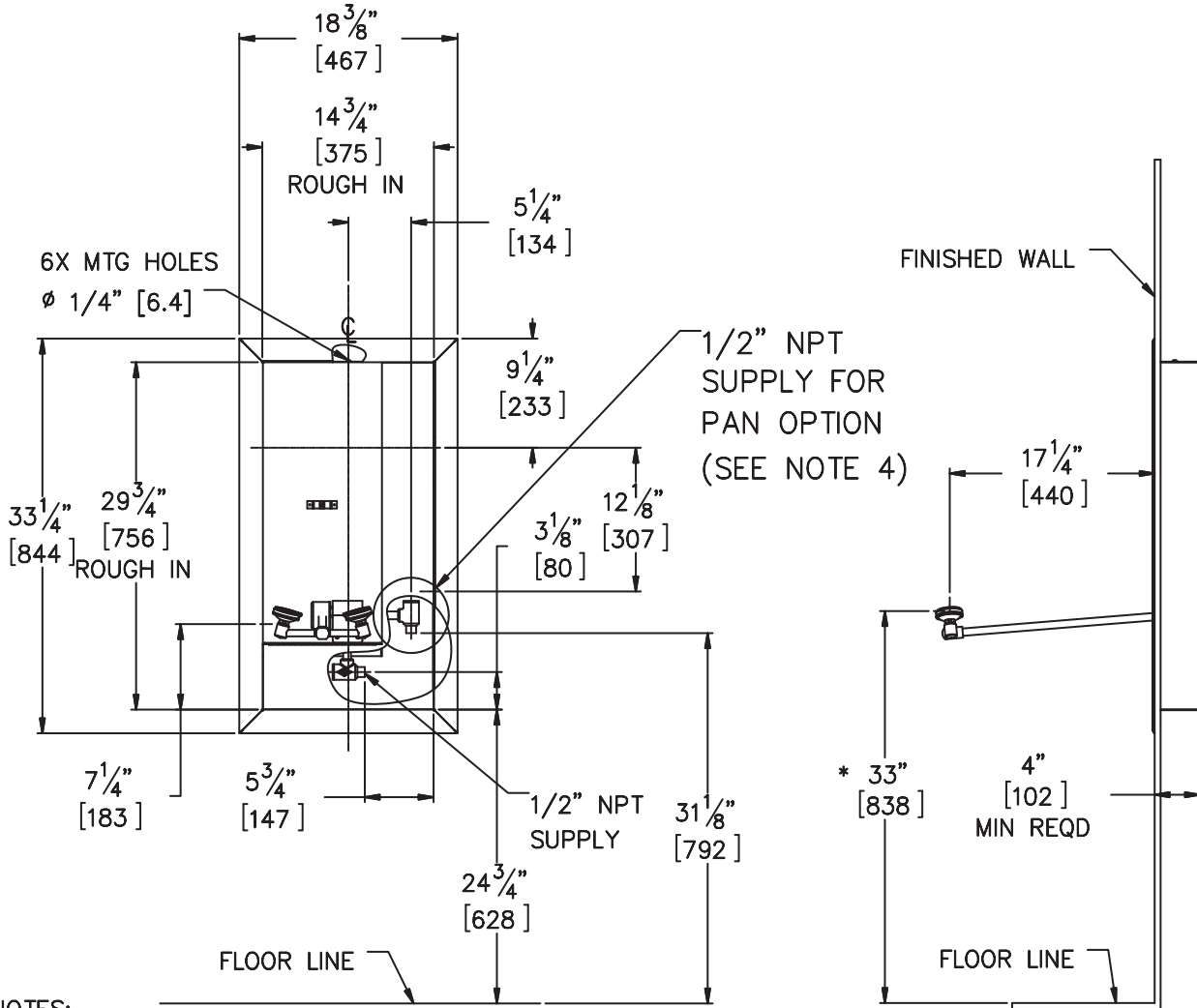
Member of  
Acorn Engineering's  
Family of Companies

ACORN SAFETY  
15125 Proctor Avenue  
City of Industry, CA  
91746 U.S.A.  
Phone 800-591-9372  
626-855-4804  
Fax 626-937-4213  
[www.acornsafety.com](http://www.acornsafety.com)

# TECHNICAL DIMENSIONS

All dimensions are nominal and subject to manufacturer's change without notice. Acorn Safety assumes no responsibility for use of void or suspended data. Dimensions may change with the addition of optional accessories. © 2008 Acorn Safety, a Division of Acorn Engineering Company. Please visit [www.acornsafety.com](http://www.acornsafety.com) for most current specifications.

**Model S0560** : Recessed, Wall Mounted, Swing Down Eye/Face Wash



**NOTES:**

1. ALL DIMENSIONS ARE IN INCHES [MM].
- \*2. ANSI Z358.1 REQUIRES NOZZLES TO BE BETWEEN 33" [838] AND 45" [1143] ABOVE FLOOR.
3. DIMENSIONS SHOWN ARE FOR RECOMMENDED ADULT HEIGHT. ADJUST VERTICAL DIMENSIONS TO COMPLY WITH FEDERAL, STATE & LOCAL CODES.
4. SUPPLY LOCATION SHOWN FOR MODEL S0560. SEE DETAIL VIEW FOR LOCATION ON S0560-PAN.

Rough-in # **S0560** Rev. A 11/20/08

Acorn Safety warrants that its products are free from defects in material or workmanship under normal use and service for a period of one year from date of shipment. Acorn's liability under this warranty shall be discharged solely by replacement or repair of defective material, provided Acorn is notified in writing within one year from date of shipment, F.O.B. Industry, California.

SELECTION SUMMARY & APPROVAL FOR MANUFACTURING

Model Number & Options \_\_\_\_\_ Quantity \_\_\_\_\_

Company \_\_\_\_\_

Contact \_\_\_\_\_ Title \_\_\_\_\_

Signature (Approval for Manufacturing) \_\_\_\_\_ Date \_\_\_\_\_



**800-591-9372**  
or 626-855-4804  
[www.acornsafety.com](http://www.acornsafety.com)